



TECHNICAL  
PROJECTS  
CONSULTANTS





## Late Shri PL Goel

### Founder

---

Not just our founder but an industry doyen, Late Mr. P. L. Goel was known for his passion for engineering excellence.

He was renowned for his expertise in intricate and creative designing, and his legacy lives on. A post-graduate in Engineering from IIT Roorkee, he started this company with just about 4 employees in the year 1980. Today, as we reminisce on our momentous journey, we only sense a feeling of gratitude towards him for motivating us to make excellence a habit. From 4 employees to 100 members strong team today, we at TPC shall continue to chart the course set by him

**Er. Pankish Goel**

M.Sc (Civil Engineering)

*State University of New York, Buffalo*

Managing Director

**Pankish** has over 26 years of rich experience in Structural Analysis & Design of various types of projects of any magnitude across India and Internationally. He has led a wide range of landmark projects in Steel and RCC Structures which include Large scale Group Housing, Hospitals, Shopping Malls, IT Buildings, Star Hotels, Airports, Sports Stadiums and Data Centres. He holds a post graduate degree in Structure Engineering from State University of New York at Buffalo..

**Er. Amrit Paul**

M.Tech (System Structure Engineering)

*IIT Kharagpur*

Managing Partner

**Amrit** has over 38 years of rich experience in structural engineering, site execution, BD and new acquisitions across geographies of India and abroad as well. He has led a wide range of landmark projects in RCC and steel – residential and commercial tall buildings, hospitals, airports, malls and stadiums. He holds a post graduate degree from IIT Kharagpur.

Established in 1980, TPC Technical Project consultants Pvt. Ltd. possess three decades reputation for designing numerous landmark projects with state of art designs, uncompromising quality and high ethical standards. with a strong focus on quality engineering solutions both at the national and international front.

We have grown steadily, building success on the belief that every client deserves exceptional service. We value our relationships with our clients and seek to continue them beyond individual projects.

Our expert and highly experienced engineers working with passion for providing innovative, optimal and creditworthy solutions. We are well known for new imaginative solutions and timely delivery of our projects.

TPCL being a leader in design and construction of projects from past 30 years brings a vast range of experience in all sectors of the construction Industry. TPCL's knowledge of structural engineering, quantity surveying and cost control and project management is imperative.

In addition, TPC carries expertise of building health study and retrofiting

**100****MASTER MINDS****1000+****PROJECTS****100+****CLIENTS**



## GROUP COMPANIES

**ARUN NADIG**

ME (Structures)  
Principal Designer  
Nadig consultants

**NADIG CONSULTING**

Established in 1985, Nadig Consulting have a large and varied experience in the planning, design, management and construction of infrastructure and large industrial projects. We offer skills, experience and a track record in the delivery of key projects, combined with technical leadership and innovation for more efficient and cost effective residential, industrial and commercial buildings.

We essentially plan buildings for maximum efficiency, with use of latest technology in combination with local materials and resources . In each case we will work with the basic constraints of the building and incorporate your requirements such as affordability, durability.

We believe that a well-designed living environment really pays dividends, not only does it help portray a social identity, but it also introduces an effective approach to facilities management, resulting in better community practices.





## SUSHANT GOEL

### Partner

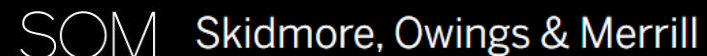
MSc Computational Mechanics  
University of Stuttgart, Germany

Sushant Goel is a post-graduate structural engineer from University of Stuttgart and was based in Germany for seven years. Over there he worked on projects located in the USA, Europe and Middle East that relate to steel grid shells, membranes, cable facades, movable roofs and footbridges.

He has been involved in Indian projects of various scales providing structural and facade engineering services. These include (a) cable stayed footbridge and diagrids at Bharat Vandana Park in Delhi, (b) steel dome and long span roofs at Bestech Athena mall in Gurugram, (c) as well as a number of private residential projects involving facades and structural glass.

As Visiting Faculty at CEPT Ahmedabad, Sushant engages with post-graduate structural engineering students to share project experiences and bridge the gap between academia and industry.

## INTERNATIONAL COLLABORATIONS:

The logo for Eckersley O'Callaghan, featuring the company name in a bold, orange, sans-serif font.The logo for Skidmore, Owings & Merrill (SOM), featuring the letters "SOM" in a large, white, serif font, followed by the full name "Skidmore, Owings & Merrill" in a smaller, white, sans-serif font, all on a black rectangular background.



Selected Projects



Quicken Loans Arena, Ohio



Bestech Athena, Delhi-NCR



Samuel De Champlain Bridge, Quebec



Dinosaur Park, Bautzen



Christopher Newport University, Virginia



Rapid Erect Sun Shelter, Pune



BCG Level 23 Greenhouse, Texas



Atakule Shopping Center, Ankara



Retractable membrane, Stockholm



## OUR SERVICES

**FACADE**

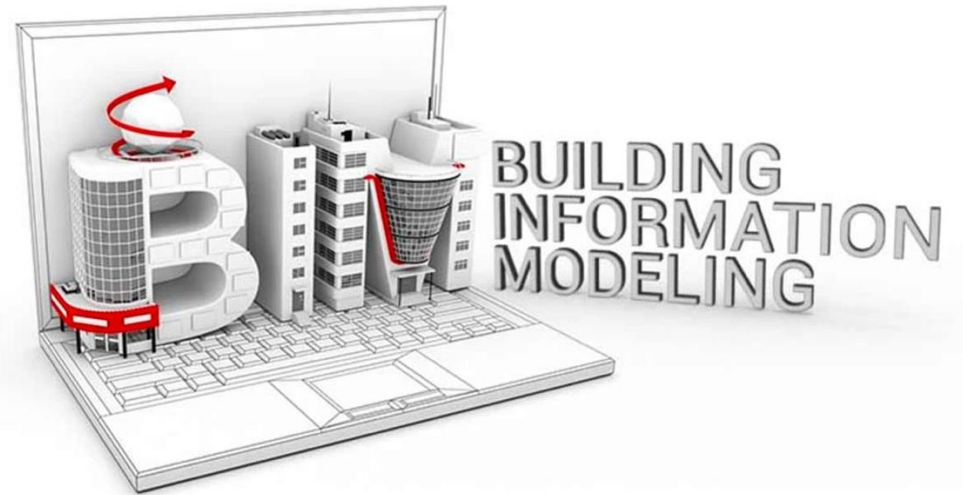
**CARBON**

**BIM**

**TIMBER**

**STEEL**

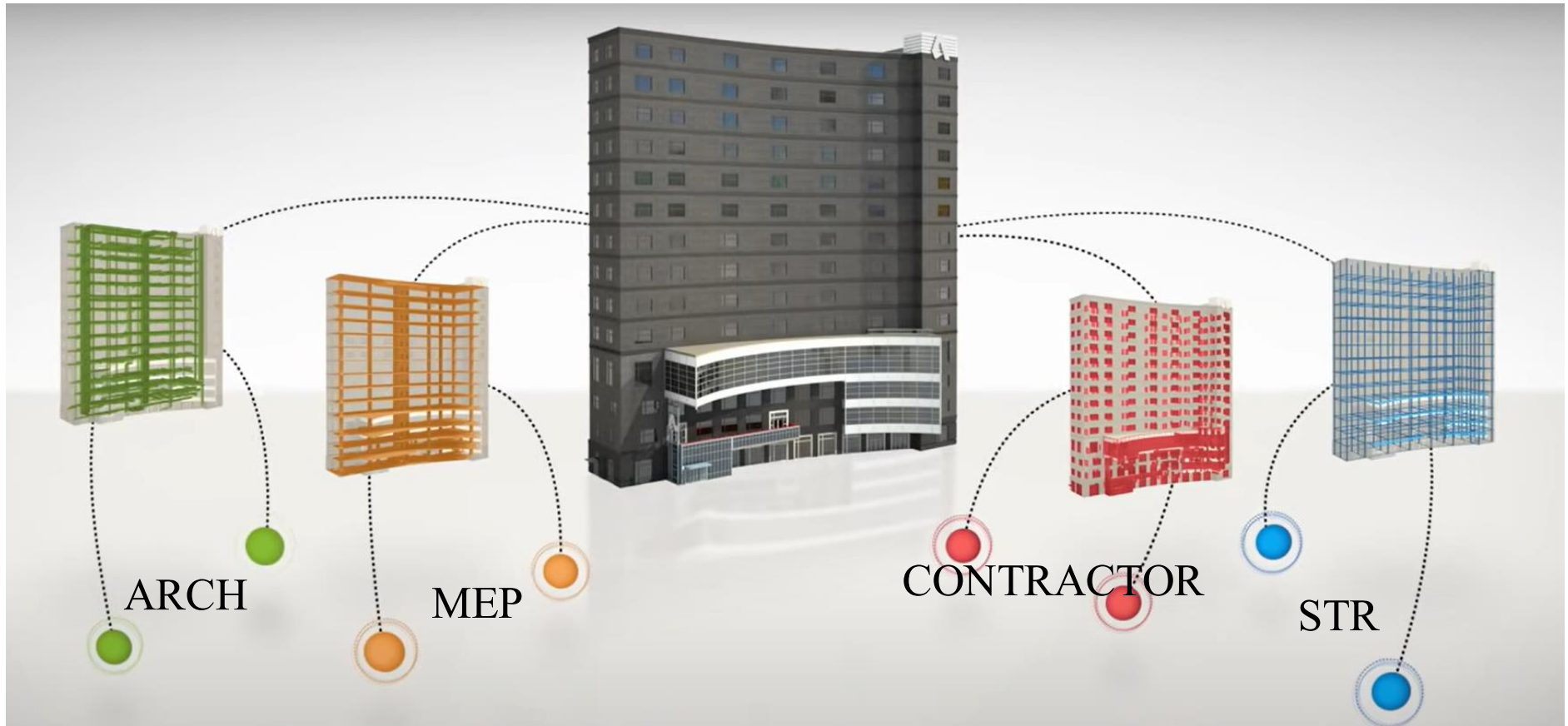
**GLASS**



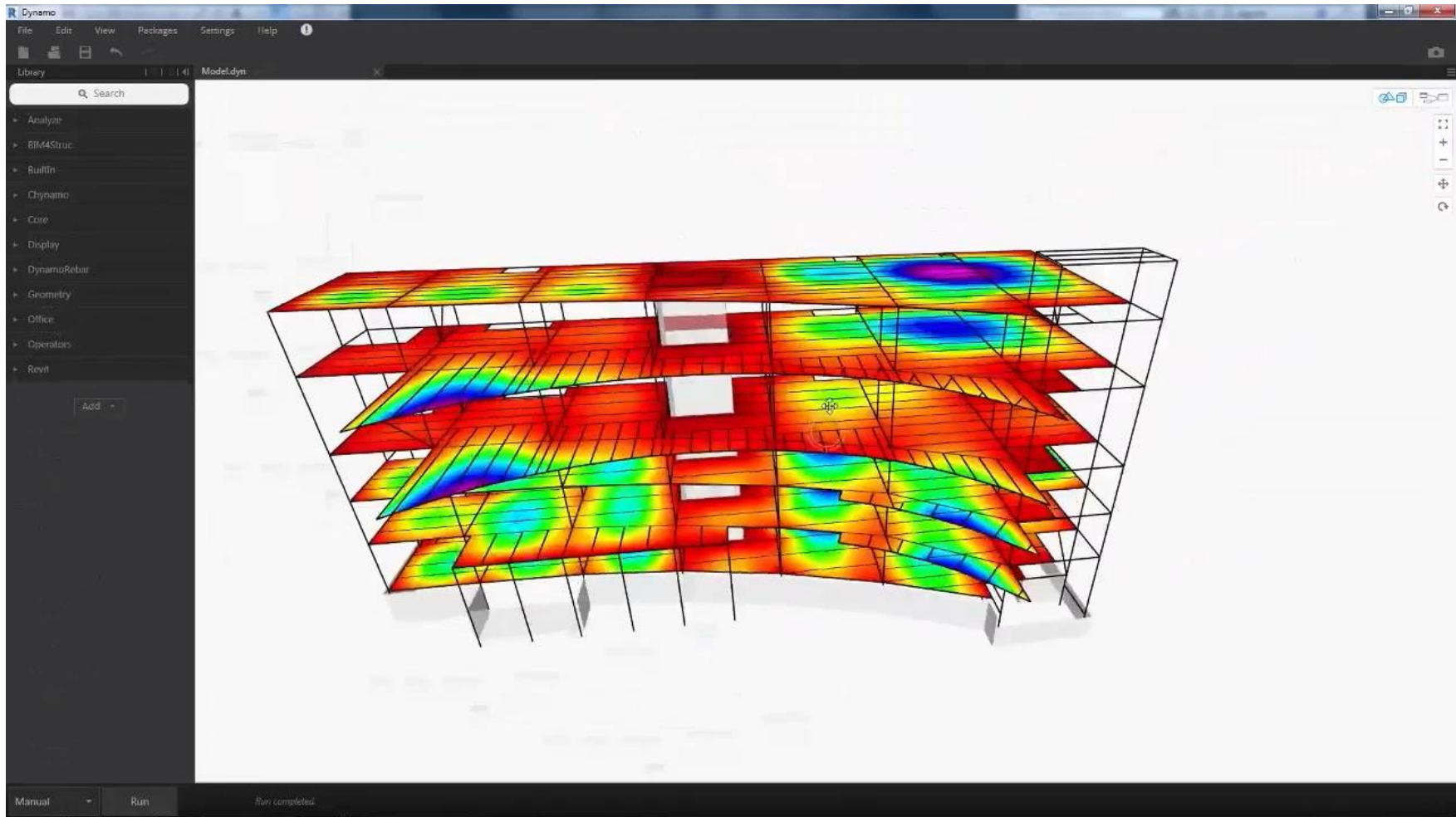
Building Information Modeling (BIM) takes drafting to the next level by creating a **smart, 3D digital model** of your building that includes **not just drawings** but also valuable data about **materials, costs, and timelines**.

Unlike AutoCAD, where you work on **2D or 3D drawings in isolation**, BIM connects every detail of the project, allowing architects, engineers, and contractors to collaborate better and **avoid costly mistakes**.

It helps you visualize the entire project before construction begins, detect potential issues early, and **make informed decisions** - all of which **save time and money** while delivering a more efficient and sustainable building.



BIM enables multi disciplinary **collaboration** between various stakeholders in the project to produce a **smart / integrated design** solution.



## VIDEO

Generation of **structural plans, sections, elevations and details** from a coordinated **clash and error free** BIM model





## Benefits of BIM Clash Detection

- Minimize reworks
- Eliminate workflow clashes
- Eliminate design bottlenecks early
- Improves interdisciplinary collaboration
- Automatic clash detection and resolutions
- Reduce risk and bring down construction costs

## The Six Levels of Development (LOD)

The American Institute of Architects (AIA) and the Associated General Contractors of America (AGC) have established a commonly used LOD framework that breaks down the building model into specific levels:

**LOD 100—conceptual design:** At this stage, the model represents the basic shape and size of elements without detailed information. It's used to convey the overall design intent.

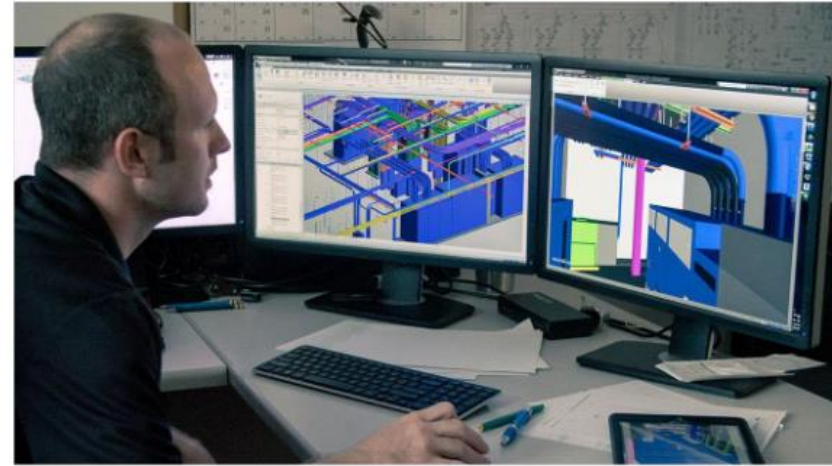
**LOD 200—schematic design:** The model becomes more refined, incorporating approximate quantities, sizes, shapes and locations of elements. It helps in analysing spatial relationships and early design concepts.

➔ **LOD 300—detailed design:** In this phase, the model includes geometric information, specific sizes, shapes and detailed object components. It's used for producing construction documents and coordinating different disciplines.

**LOD 350—construction documentation:** The model includes detailed assemblies and fabrication or construction-level information. It's used for generating construction documents and shop drawings.

**LOD 400—fabrication and assembly:** This level involves the creation of detailed models with specific assemblies and connections, suitable for fabrication and assembly purposes.

**LOD 500—as-built or facility management:** The model at this stage includes information about the installed and operational elements of the building, reflecting real-world conditions for maintenance and facility management.



The details in a building model grow more refined at each level.



**TPC**

**TECHNICAL  
PROJECTS  
CONSULTANTS**

# ASSOCIATE DIRECTORS

**Er. KVL Sreeram**



**Er. Sumeet Issar**



**Er. RK Duggal**



**Ar. Michael Odindo**



**. Arun Kumar**



**Er. Vishnu Chaudhary**



**Ar. Vishesh Behl**



**Deepak Saxena**



**Er. Sunil Mathur**



Established in 1980, TPC Technical Project consultants Pvt. Ltd. possess three decades reputation for designing numerous landmark projects with state of art designs, uncompromising quality and high ethical standards. with a strong focus on quality engineering solutions both at the national and international front.

We have grown steadily, building success on the belief that every client deserves exceptional service. We value our relationships with our clients and seek to continue them beyond individual projects.

Our expert and highly experienced engineers working with passion for providing innovative, optimal and creditworthy solutions. We are well known for new imaginative solutions and timely delivery of our projects.

TPCL being a leader in design and construction of projects from past 30 years brings a vast range of experience in all sectors of the construction Industry. TPCL's knowledge of structural engineering, quantity surveying and cost control and project management is imperative.

In addition, TPC carries expertise of building health study and retrofitting

**100****MASTER MINDS****1000+****PROJECTS****100+****CLIENTS**





### STRUCTURE ENGINEERING

- STRUCTURE DESIGN
- STRUCTURE AUDIT, NDT & SUFFICIENCY STUDY
- STRUCTURE REHABILITATION & RETROFITTING
- PERFORMANCE BASED DESIGN

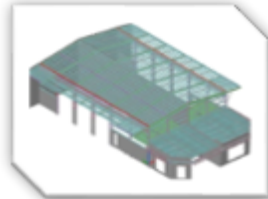


### BRIDGE & INFRASTRUCTURE ENGINEERING

- RCC/STEEL BRIDGES
- CABLE STRAYED BRIDGES
- SUSPENSION BRIDGES
- ROB's/RAILWAY BRIDGES



### BUILDING INFORMATION MODEL (BIM)



### STEEL DETAILING



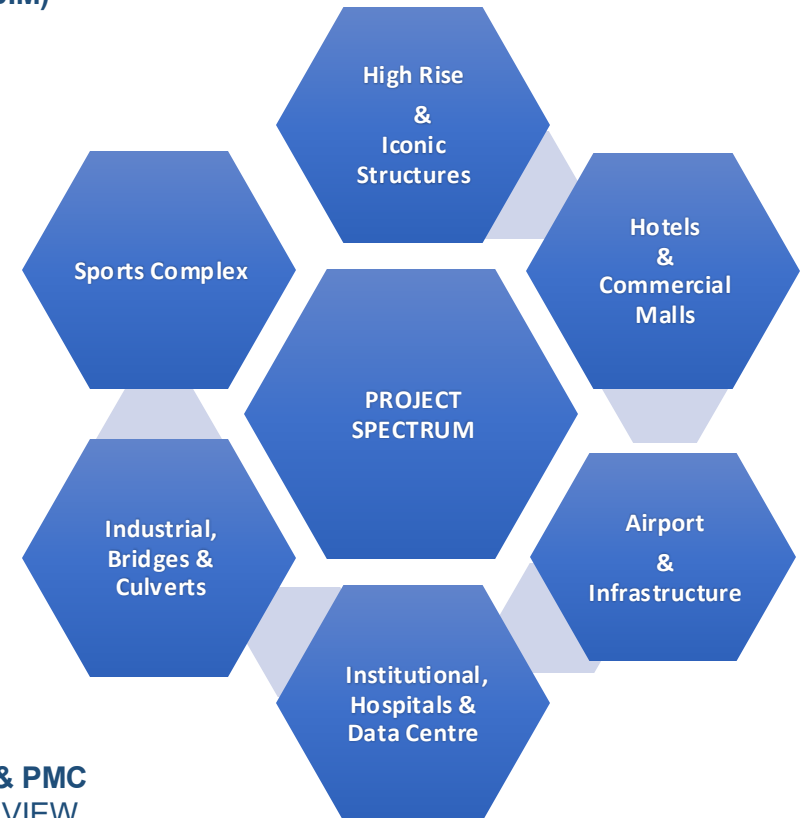
### CONSTRUCTION ENGINEERING

- PRE-CAST TECHNOLOGY
- EARTHQUAKE RESILIENCE TECHNOLOGY DESIGN
- CONTROL OF STRUCTURE



### CONSTRUCTION MANAGEMENT & PMC

- STRUCTURE DESIGN PEER VIEW
- STRUCTURE OPTIMISATION
- QS & QA
- SITE SUPERVISION



TPC

TECHNICAL  
PROJECTS  
CONSULTANTS

# OUR CLIENTS



many more

**TPC**

TECHNICAL  
PROJECTS  
CONSULTANTS

OUR REACH



**INDIA**



**TAJIKISTAN**



**AFGHANISTAN**

**TPC**

TECHNICAL  
PROJECTS  
CONSULTANTS

# KEY PROJECTS



# FAIRMONT HOTEL MUMBAI



## *Base Isolation Structure, Largest in Country, Multiple Steel Technologies used*

Fairmont Hotel is one of the India's most prestigious and luxurious 5-Star Hotel in Mumbai at the T-2 Terminal, Chhatrapati Shivaji International Airport.

The building is totally constructed with **3 basements +LG+G+11 floors** with built up area 10 lacs sq. ft approx. Water table was at approximately 8.0m and founding level was 18.0m. Secant piles were used for the project.



# Brahma Bestech Athena, Gurugram

- Project Type: Standalone building
- No. of floors: **4 Basement + Ground +21 floors**
- Brahma Bestech Athena is the first Retail & Commercial Iconic Tower on the NH8 with 22 stories spread across 12.206 acres and is one of the unique and largest Commercial towers in. Athena has a total parking bay of 3,500 cars with double heightened parking space with separate entry and exit points. Water table was low and hence open cut excavation with Conventional RCC wall construction was done.

TPC

TECHNICAL  
PROJECTS  
CONSULTANTS





# 4S Developers – Residential Development at Sector 59, Gurugram, Delhi NCR

TPC





The logo for Technical Projects Consultants (TPC) features the letters 'TPC' in a bold, white, sans-serif font, centered within a dark blue square.

TECHNICAL  
PROJECTS  
CONSULTANTS

# Z Estates Padmanabha, Bhubaneswar

Padmanabha, a residential project located in Pahala, Bhubaneswar. Designed by nationally acclaimed architects and world-class consultants, this premium condominium is the latest offering from Z Engineers Construction Private Ltd (Z Estates), the most trusted real estate brand in Odisha since 1984.

This project has poor soils with water table at ground level. D-wall with *top down* construction is followed for the project.





## Z-1 (Phase-4), Bhubaneswar

Four basements are proposed for the project, water table is at 12.0m and rocky strata is found at 8.0 m level. The building .

The building is 4 basements +G+37 floors.



TECHNICAL  
PROJECTS  
CONSULTANTS

# Ascendas VITP Park, Hyderabad

Ascendas IT Park, located in the vibrant city of Hyderabad, a leading hub for information technology and business process outsourcing services.

The park's strategic location provides easy access to major areas of the city and is well connected by various modes of transportation including the Hyderabad Metro and several major roads.

*The building is with 3 basements +G+16 floors.*





TPC

TECHNICAL  
PROJECTS  
CONSULTANTS

T HUB— HYDERABAD





**TPC**

TECHNICAL  
PROJECTS  
CONSULTANTS

## MIXED USE COMMERCIAL DEVELOPMENT – NOIDA





# 4S Developers – Residential Development at Sector 59, Gurugram, Delhi NCR

TPC





TPC

TECHNICAL  
PROJECTS  
CONSULTANTS



AGRIM SKY TOWER - HYDERABAD





**TPC**

TECHNICAL  
PROJECTS  
CONSULTANTS

## GRANDTHUM – GREATER NOIDA





**TPC**

TECHNICAL  
PROJECTS  
CONSULTANTS



**SPACE ARROW – SEC 78 GURGAON**



# SHALIMAR COMMERCIAL LUCKNOW

TPC

TECHNICAL  
PROJECTS  
CONSULTANTS



**TPC**

TECHNICAL  
PROJECTS  
CONSULTANTS

**JAYPEE SUN COURT TOWER - NOIDA**

**BU Area : 12 Lac Sq Ft**

**No of Story – 30**





**TPC**

TECHNICAL  
PROJECTS  
CONSULTANTS

## **RAMA KRISHNA VENUZIA, VIJAYWADA**





**TPC**

TECHNICAL  
PROJECTS  
CONSULTANTS

**KALYPSO RESIDENTIAL  
TOWER, TAJ EXPRESSWAY,  
SEC-128, NOIDA**





**TPC**

**TECHNICAL  
PROJECTS  
CONSULTANTS**

## **LOTUS – HOUSING PROJECT ‘SPORTS CITY’, SECTOR-79, GREATER NOIDA**





**TPC**

**TECHNICAL  
PROJECTS  
CONSULTANTS**

**JAYPEE KENGISTON BOULEVARD, TAJ EXPRESSWAY,  
NOIDA**





**TPC**

TECHNICAL  
PROJECTS  
CONSULTANTS

## NBCC AMRAPALI PROJECTS DREAM VALLEY, NOIDA EXTENSION





**TPC**

**TECHNICAL  
PROJECTS  
CONSULTANTS**

## **ALPHA –ONE HOUSING, GURUGRAM**





**TPC**

TECHNICAL  
PROJECTS  
CONSULTANTS



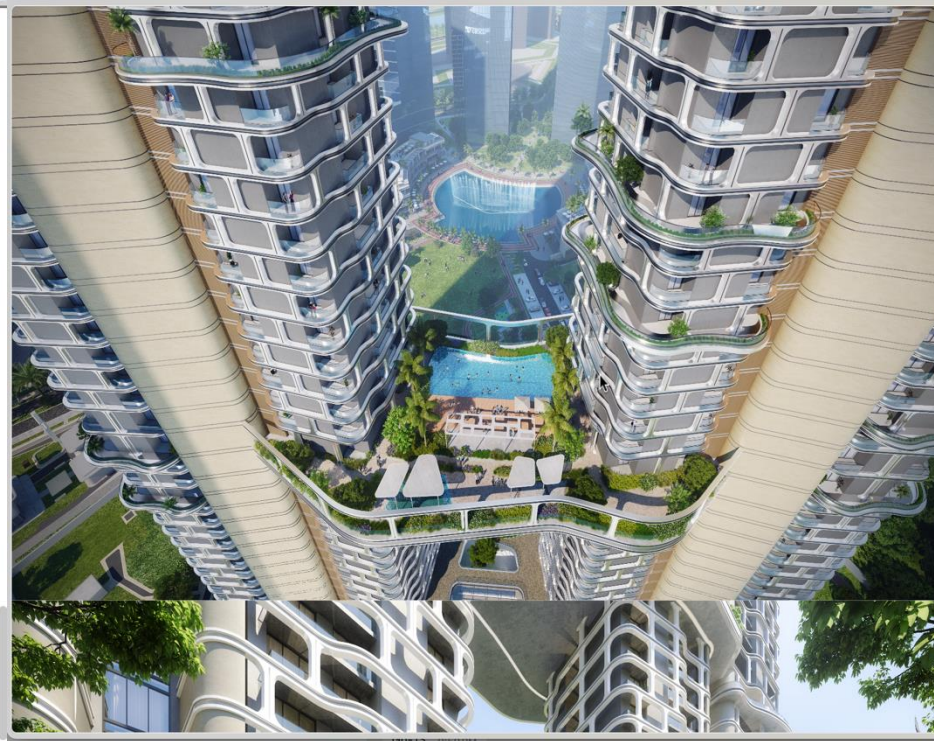
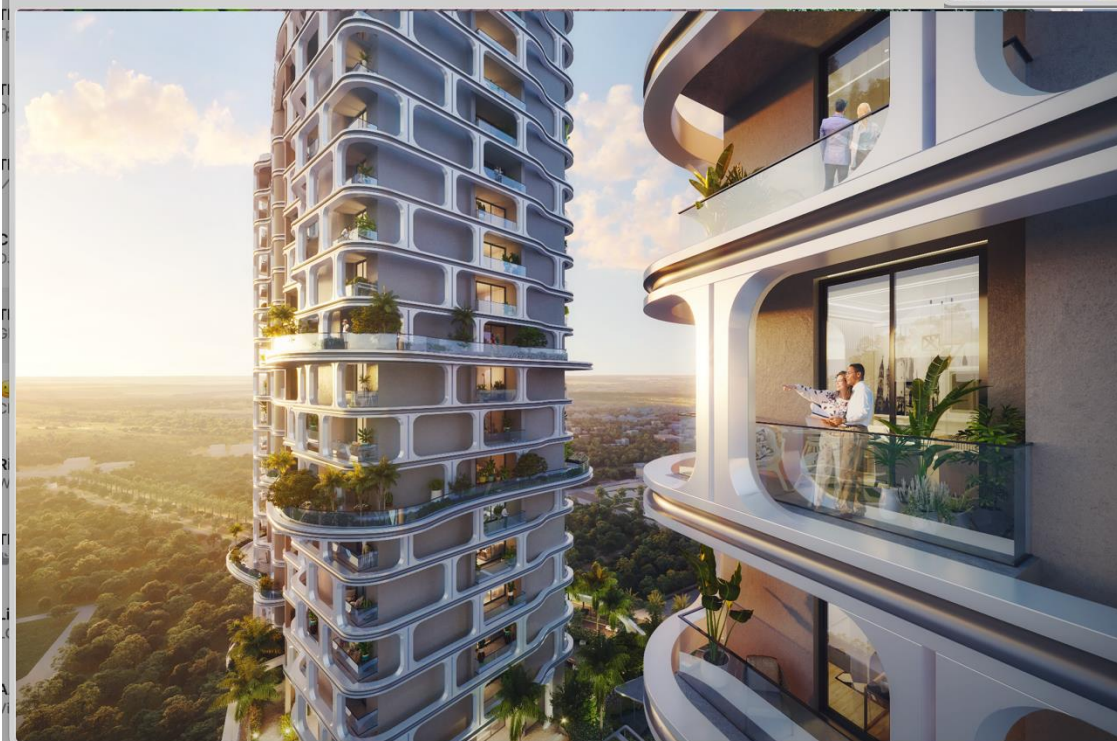
**DLF – THE PRIMUS GURGAON**  
**BU AREA : 17 LAC SQ FT**





TECHNICAL  
PROJECTS  
CONSULTANTS

## SHALIMAR -GH-13, LUCKNOW





**TPC**

TECHNICAL  
PROJECTS  
CONSULTANTS

**M3M**  
***THE CULLINUM***  
***SECTOR 94 NOIDA***



ARTISTIC IMAGES

# SHALIMAR SKY GARDEN LUCKNOW



TECHNICAL  
PROJECTS  
CONSULTANTS



SHALIMAR – GH 21  
LUCKNOW





**TPC**

TECHNICAL  
PROJECTS  
CONSULTANTS

**DLF ULTIMA – GURGAON**  
BU Area : 32 Lac Sq Ft





**TPC**

TECHNICAL  
PROJECTS  
CONSULTANTS

**KINGSTON TOWER**

**LOTUS ARENA – SEC 79 NOIDA**  
**BU Area : 9 Lac Sq Ft**  
**No of Story – 33**



**TPC**

**TECHNICAL  
PROJECTS  
CONSULTANTS**

## **ORD – SECTOR 132- NOIDA**





TPC

TECHNICAL  
PROJECTS  
CONSULTANTS

MONNET M1 TRADE TOWER – SEC 37 FARDIABAD





**TPC**

TECHNICAL  
PROJECTS  
CONSULTANTS



**CITY POLICE COMMISSIONERATE HQ, HYDERABAD : 6 LAC SQ FT**



**TPC**

TECHNICAL  
PROJECTS  
CONSULTANTS

**ALPHA ONE - CITY CENTRE MALL  
AHMEDABAD  
BU AREA : 14 LAC SQ FT**





An architectural rendering of a modern, multi-story building with a white, grid-like facade. The building features large glass windows on the left side and a curved section with a green roof. The Indian national flag is visible on the top left corner of the building. The building is surrounded by lush greenery, including palm trees and flowering plants. In the foreground, there is a road with several cars, including a black SUV and a black sedan. The sky is clear and blue.

**TPC**

TECHNICAL  
PROJECTS  
CONSULTANTS

**UIDAI – MANESAR**



**TPC**

TECHNICAL  
PROJECTS  
CONSULTANTS

**UIDAI – GURGAON**





**TPC**

TECHNICAL  
PROJECTS  
CONSULTANTS

## MEDANTA GURGAON – 1250 BEDS





## Eye Care Hospital, Chennai

- Dr. Agarwal's Eye Hospital is a chain of eye specialty hospitals in India, headquartered at Chennai.

- The building is with **3 basements +G+9 floors**. Water table is at ground level and founding level is at approximately 14.0m. D-wall was constructed at site with *top down* construction.

**TPC**

TECHNICAL  
PROJECTS  
CONSULTANTS

**MEDANTA PATNA -669 BEDS**





**TPC**

TECHNICAL  
PROJECTS  
CONSULTANTS

**ALL INDIA INSTITUTE OF MEDICAL  
SCIENCE (AIIMS) – BILASPUR  
750 BEDS**



**TPC**

TECHNICAL  
PROJECTS  
CONSULTANTS

**MAX HOSPITAL – SAKET -530 BEDS**  
***FORMALLY GM MODI HOSPITAL- DELHI***





**TPC**

TECHNICAL  
PROJECTS  
CONSULTANTS

## ALL INDIA INSTITUTE OF MEDICAL SCIENCE (AIIMS) DEOGHAR - 750 BEDS



**TPC**

TECHNICAL  
PROJECTS  
CONSULTANTS

## ALL INDIA INSTITUTE OF MEDICAL SCIENCE (AIIMS) – GUWHATI





**TPC**

TECHNICAL  
PROJECTS  
CONSULTANTS

INDIAN INSTITUTE OF SCIENCE  
EDUCATION & RESEARCH  
TIRUPATI



TPC

TECHNICAL  
PROJECTS  
CONSULTANTS

THE LEELA HOTEL - DELHI





TPC

TECHNICAL  
PROJECTS  
CONSULTANTS

## PULLMAN & NOVOTEL HOTEL DELHI



**TPC**

TECHNICAL  
PROJECTS  
CONSULTANTS

**RADISSON BLU – BHUBANESWAR**





**TPC**

**TECHNICAL  
PROJECTS  
CONSULTANTS**

**CIDADE DE GOA – V**  
**BU AREA : 7.50 LAC SQ FT**



**PULLMAN & NOVOTEL , DELHI**



TPC

TECHNICAL  
PROJECTS  
CONSULTANTS

IBIS HOTEL, JAIPUR





TPC

TECHNICAL  
PROJECTS  
CONSULTANTS

GMR HOTEL, DELHI



**TPC**

TECHNICAL  
PROJECTS  
CONSULTANTS

PRIDE PLAZA- DELHI







TPC

TECHNICAL  
PROJECTS  
CONSULTANTS

DUSHANBE, SAREENA HOTEL  
TAJIKISTAN  
1,35,000 Sq Mtrs

HOTELS

INTERNATIONAL



**TPC**

TECHNICAL  
PROJECTS  
CONSULTANTS



**THE GRAND VENICE  
G NOIDA**



TPC

TECHNICAL  
PROJECTS  
CONSULTANTS

SHAN-E-AWADH- LUCKNOW





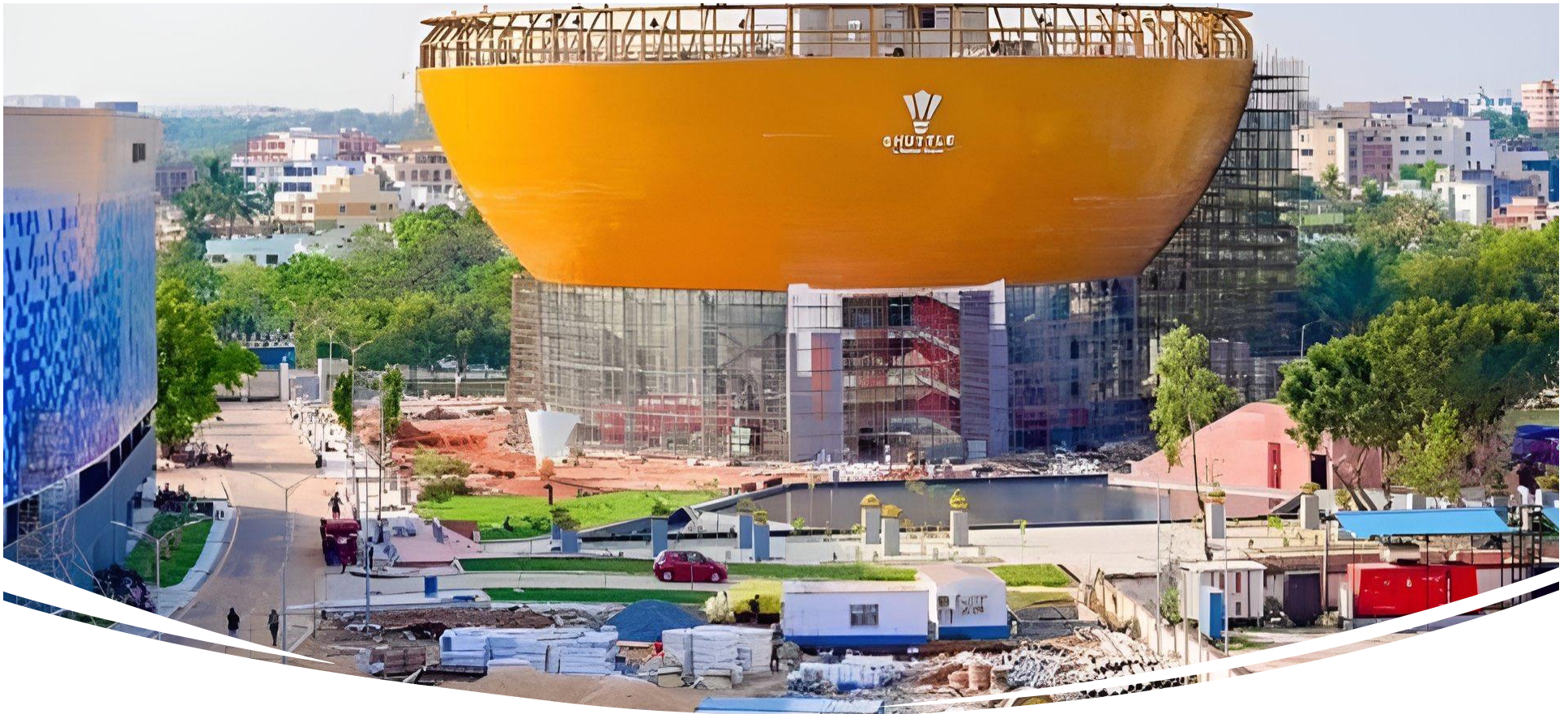
TPC

TECHNICAL  
PROJECTS  
CONSULTANTS

PARK HYATT GOA







## DALMIA BHARAT BEDMINTON ACADEMY BHUBANESWAR



**TPC**

TECHNICAL  
PROJECTS  
CONSULTANTS

# PCA STADIUM - MOHALI





TPC

TECHNICAL  
PROJECTS  
CONSULTANTS

DLF DATA CENTRE, NOIDA



- Team VSC under the guidance of PG



TPC

TECHNICAL  
PROJECTS  
CONSULTANTS

IIT HYDERABAD





# FAIRMONT HOTEL MUMBAI



*Base Isolation Structure, Largest in Country, Multiple Steel Technologies used*





TPC

TECHNICAL  
PROJECTS  
CONSULTANTS

# ISB MOHALI





TPC

TECHNICAL  
PROJECTS  
CONSULTANTS

## SECUNDERABAD RAILWAY STATION





TPC

TECHNICAL  
PROJECTS  
CONSULTANTS

ITANAGAR, ARUNANCHAL PRADESH





TPC

TECHNICAL  
PROJECTS  
CONSULTANTS

BHUBANESHWAR AIRPORT



ONI



**TPC**

TECHNICAL  
PROJECTS  
CONSULTANTS

## INDORE AIRPORT



## UDAIPUR AIRPORT





**TPC**

**TECHNICAL  
PROJECTS  
CONSULTANTS**

## **VIJAYWADA AIRPORT, ANDHRA**



**TPC**

TECHNICAL  
PROJECTS  
CONSULTANTS

## INTERNATIONAL AIRPORT, KHORDA-ODISHA





TPC

TECHNICAL  
PROJECTS  
CONSULTANTS

## RANCHI RAILWAY STATION





**TPC**

TECHNICAL  
PROJECTS  
CONSULTANTS

**RANCHI RAILWAY STATION**

**NORTH SIDE STATION**  
**BUILDING**  
**AERIAL VIEW**



**SOUTH SIDE STATION**  
**BUILDING**  
**AERIAL VIEW**





TPC

TECHNICAL  
PROJECTS  
CONSULTANTS

# EMPANELMENTS



**MUNICIPAL CORPORATION  
OF DELHI**



**AMDAVAD MUNICIPAL  
CORPORATION**



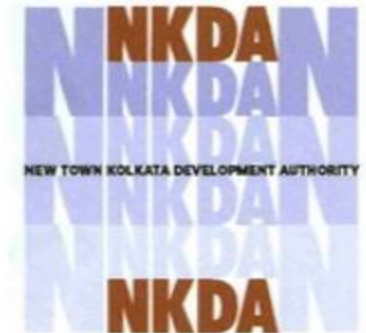
**GREATER HYDERABD  
MUNICIPAL CORPORATION**



**MUNICIPAL CORPORATION OF  
GREATER MUMBAI**



**APCRDA**  
**AMARAVATI METORPOITAN  
REGION DEVELOPMENT AUTHORITY**



**NEW KOLKATTA  
DEVELOPMENT AUTHORITY**



## **TPC TECHNICAL PROJECTS CONSULTANTS PVT LTD.**

B-74, Sector- 57, Noida- 201301 Uttar Pradesh India  
T :+91 120 4306800/ 805 W: [www.tpcl.in](http://www.tpcl.in) E: [info@tpcl.in](mailto:info@tpcl.in)

### **HYDERABAD**

TPC Technical Projects Consultants Pvt Ltd.  
Onewest Building  
1st Floor, Survey No.988/AA and 88/E  
Financial District, Nanakramguda,  
Hyderabad – 500

### **BANGALORE**

TPC Technical Projects Consultants Pvt. Ltd.  
#405, Blue Cross Chambers  
Infantry Road, Bangalore,  
Karnataka India

### **AFRICA**

TPC Technical Projects Consultants Pvt Ltd.  
WESTLANDS, NAIROBI, KENYA